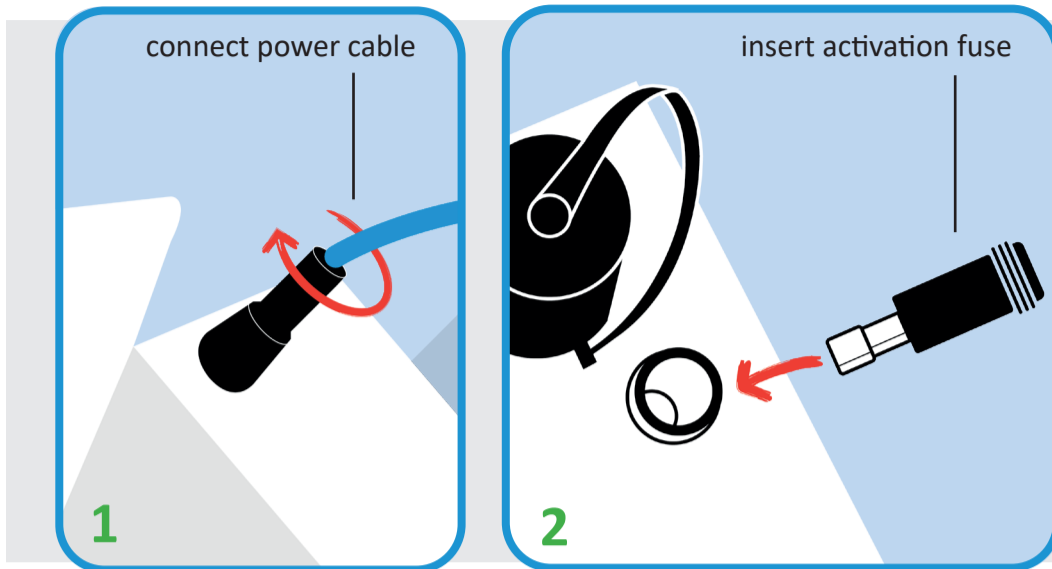


AQMesh SOLAR PANEL GUIDANCE

Please read and remove this sticker before use



INSTALLATION

IMPORTANT: Remember to insert activation fuse!

Tools required: AQMesh fitting kit (comes with pod), handle for hex bit, an appropriate flat blade screwdriver, a PZ2 screwdriver and a 8mm socket

Use the mobile app to check the battery is charged and the pod is working before you leave the site

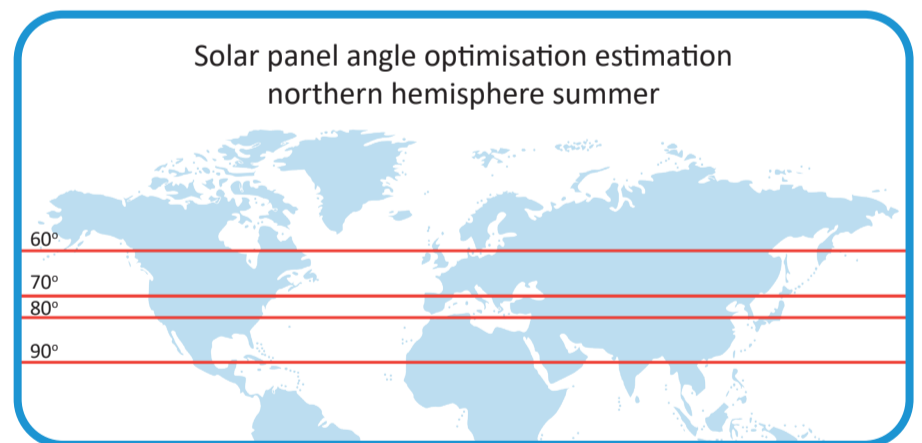
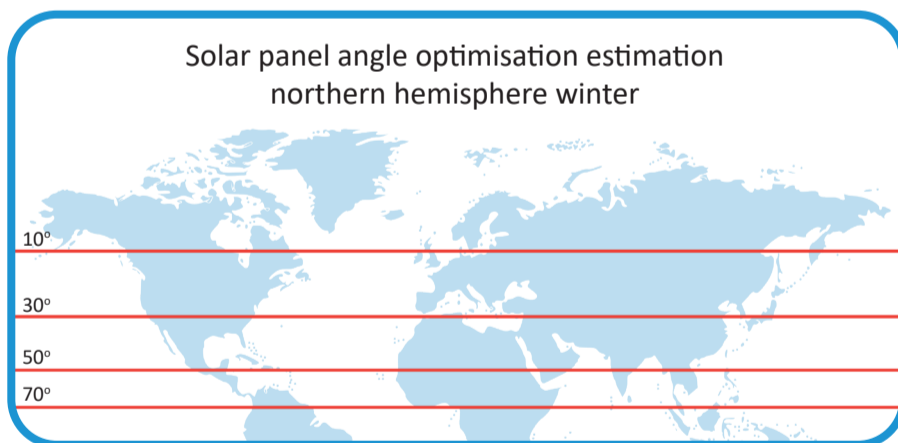
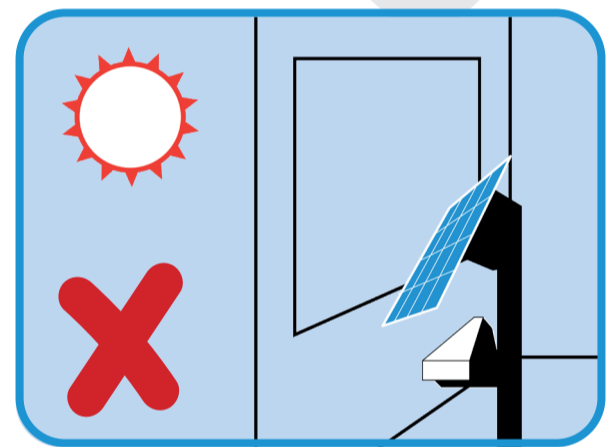
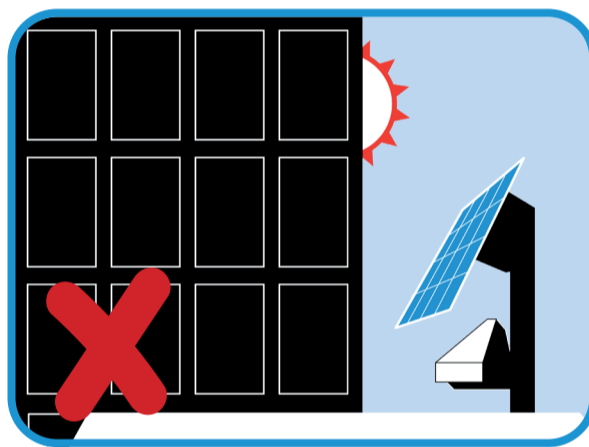
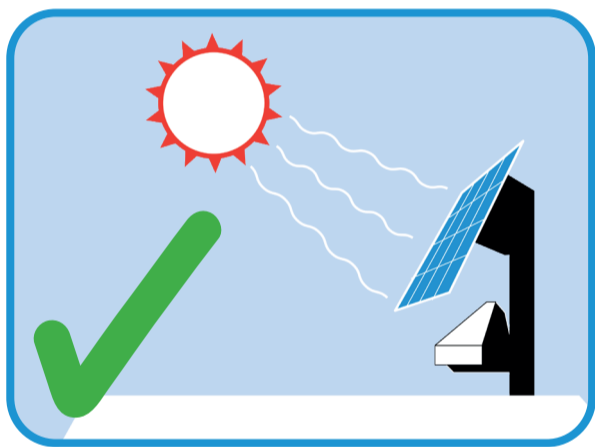
Please ensure you have read the installation instructions in the solar panel operating manual www.aqmesh.com/solarmanual



POSITIONING

For optimal output from the solar panel all cells should be in direct sunlight throughout the day

- Position the panel towards the midday sun at the correct angle
- Avoid installing in the shade created by nearby buildings
- Avoid shadows of other objects, such as partial tree cover or even small wires
- Do not install indoors, or behind any other form of window or material



CLEANING & MAINTENANCE

The panel will require very little maintenance but please ensure it is kept clean of any dirt, dust or other material that may gather over time

- To avoid hot surfaces clean in the morning or evening only
- Use warm water and soft cloth
- Do not spray the panel with cold water
- The lead-acid battery will need replacing every 2 years



HEALTH & SAFETY

When installing or cleaning the panel ensure you are following your local health & safety guidelines with regards to working at heights and relevant electrical regulations



MOBILE APP

The output from the solar panel and the lead-acid battery charge state can be checked at any time using the mobile application, which connects to the solar panel via Bluetooth

Scan the QR codes to download the mobile app:

www.aqmesh.com/iOSapp or www.aqmesh.com/androidapp